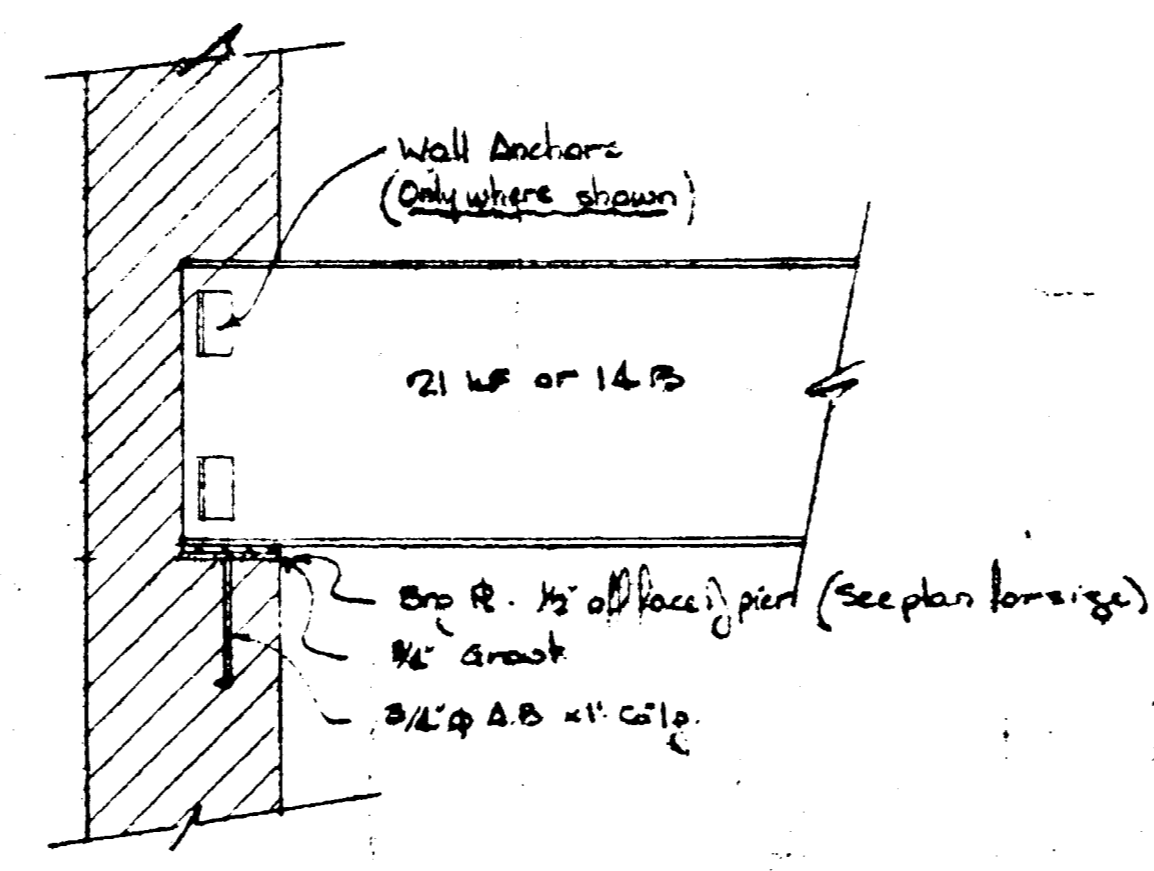


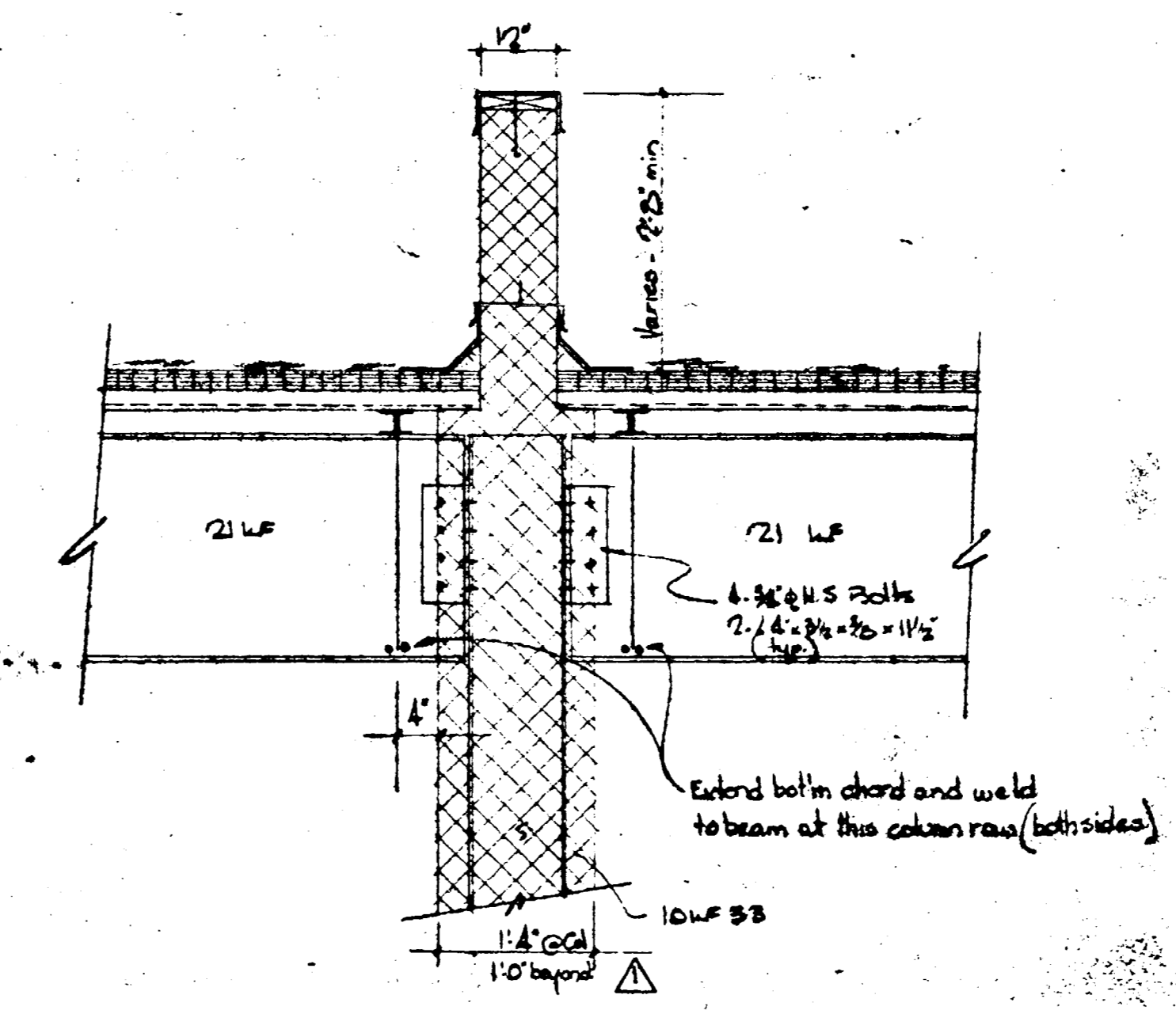
FRAMING NOTES

1. Roof shall be bonded-type 4 ply built-up roofing with gravel topping on 1" rigid insulation 4" deep 1/2" deep steel deck composite over 3 spans and welded @ 12" max on.
2. Bracing - all be 1/2" x 1/2" x 1/2" and shall be welded top and bottom. Provide bracing of all end panels.
3. Top of steel beam shall be 1/2" from top of joists.
4. Top of joist shall be 1/2" above FF @ rear and 1/2" below FF @ front.
5. Frame all roof openings with 2x4's @ 12" on center unless otherwise noted.

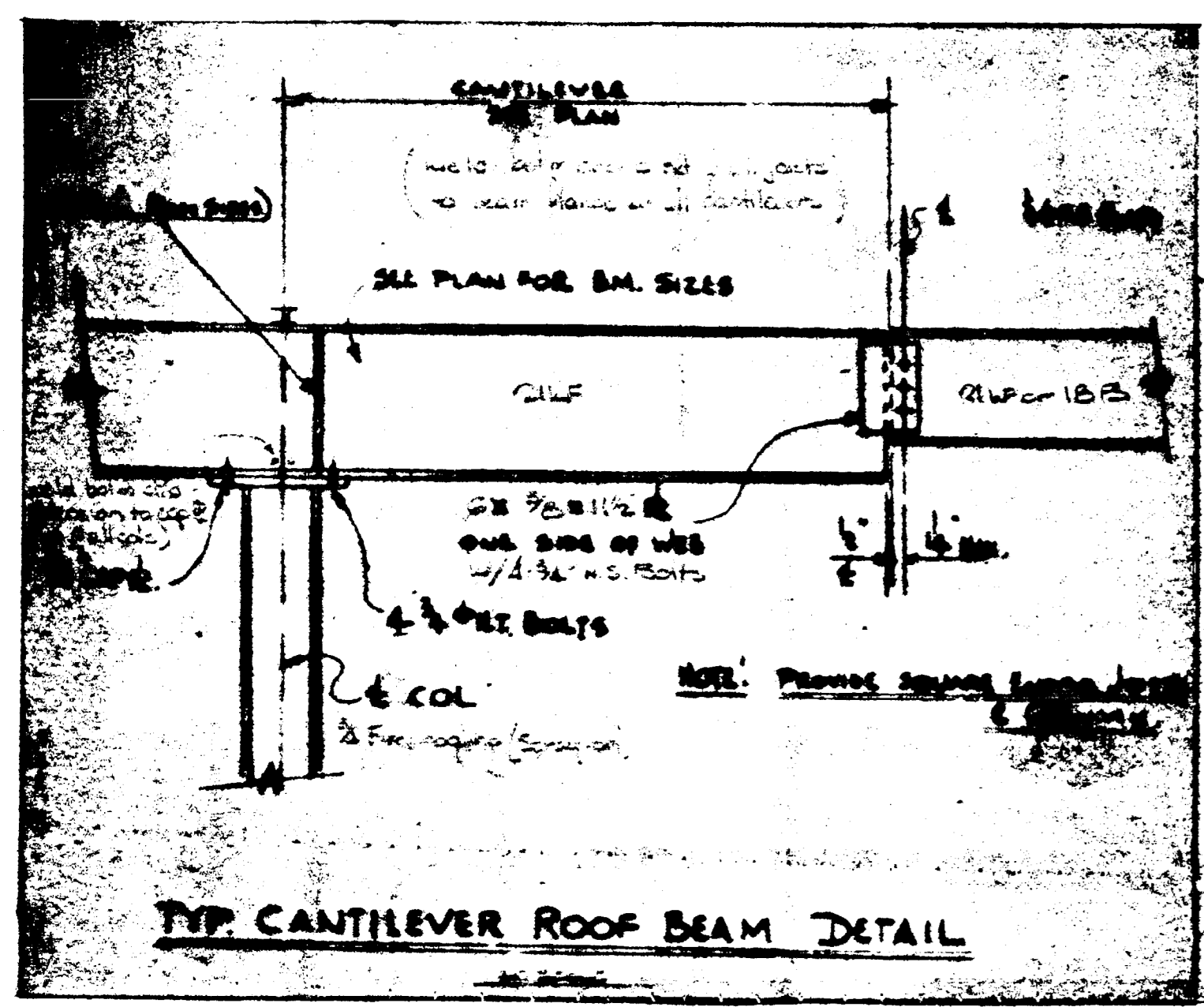
ROOF FRAMING PLAN
SCALE: 1/8" = 1'-0"



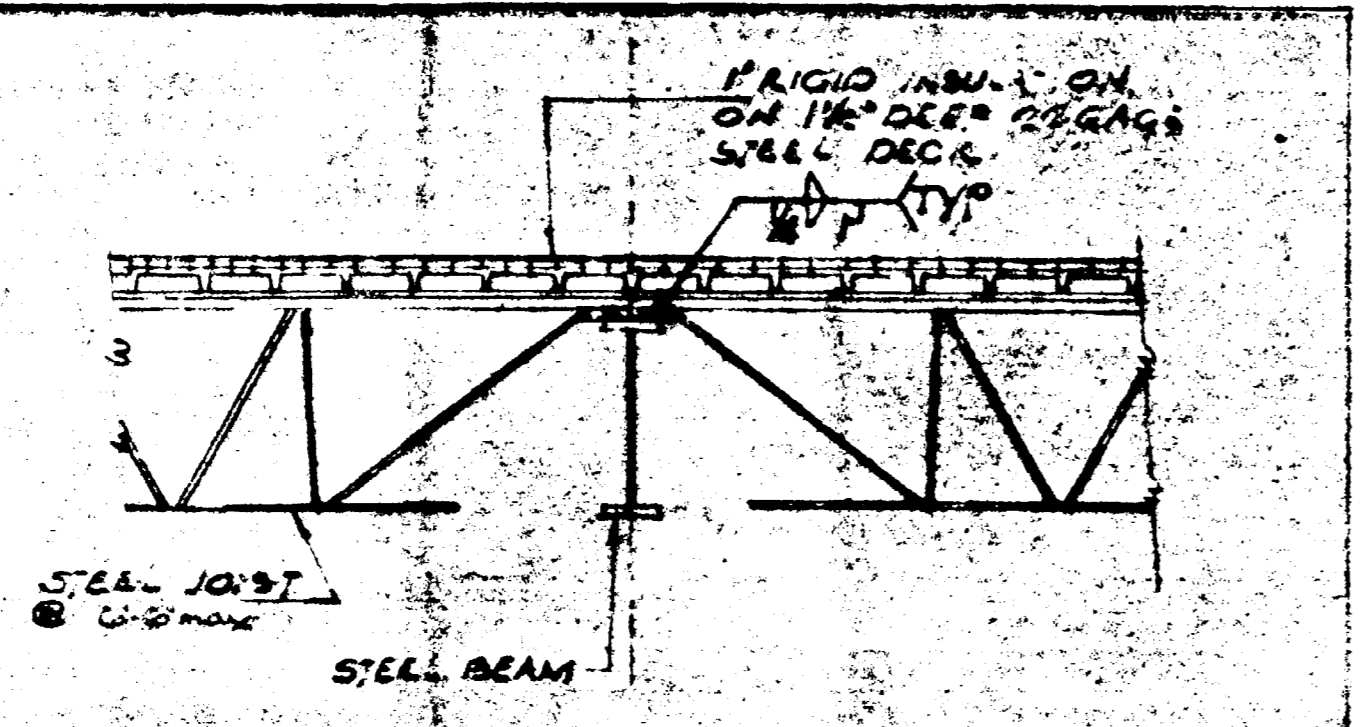
TYP BEAM BEARING DETAIL



DETAIL 'A'



TYP CANTILEVER ROOF BEAM DETAIL



SECTION 'S1' scale 1/8" = 1'-0"

REVISIONS		DATE		BY	
1					
2					
3					

WAREHOUSE #24 STAFFVILLE INDUSTRIAL LEONARD COUNTY, GEORGIA		MARTINI INDUSTRIAL PARE VENTURE 2024 W. Highway 20 Adelphi, Maryland	MARRIS AND SONS CONSULTING ENGINEERS 2175 W. Highway 20 Adelphi, Maryland
--	--	---	--