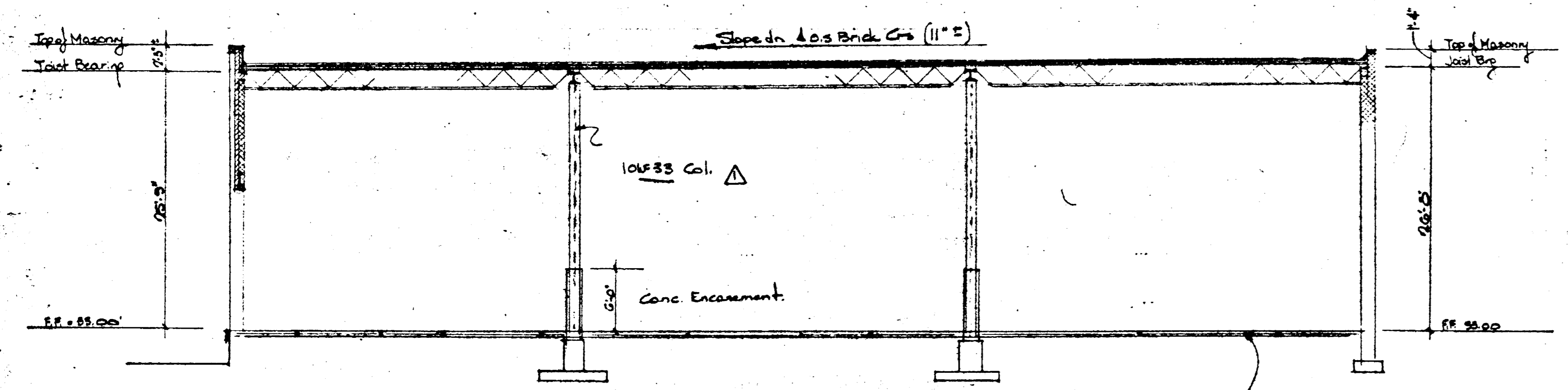
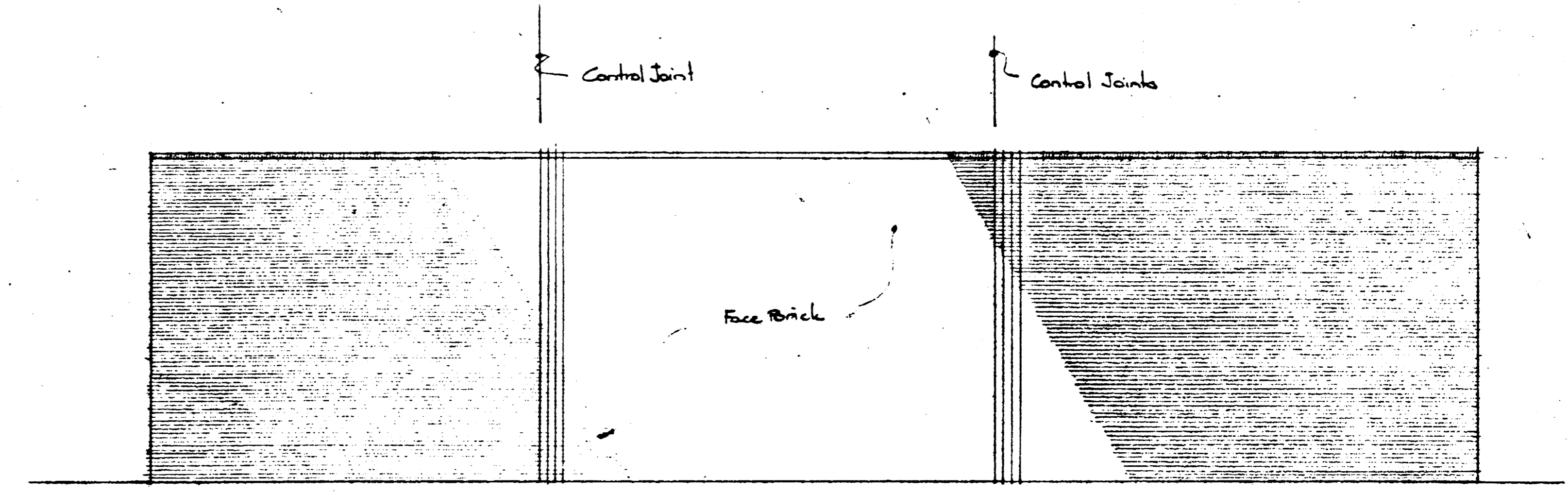


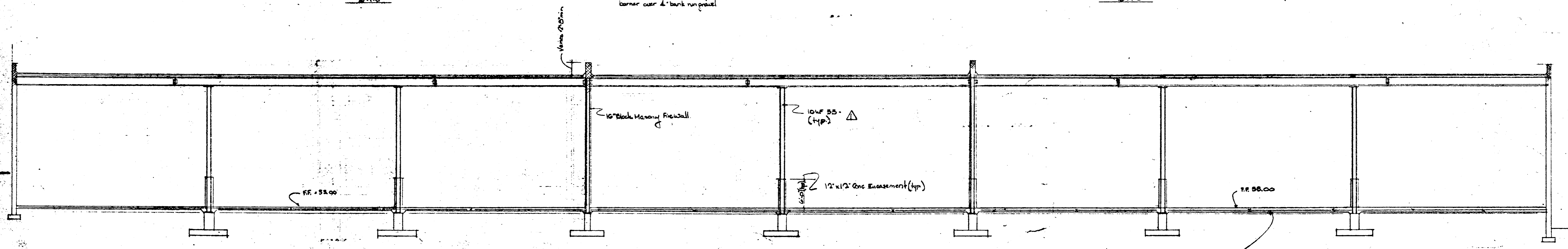
FRONT ELEVATION  
10'-11'0"



TYPICAL TRANSVERSE SECTION  
10'-11'0"



RIGHT SIDE ELEVATION  
10'-11'0"



TYPICAL LONGITUDINAL SECTION  
10'-11'0"

PROPOSED		<b>WAREHOUSE #24</b>	
MYATTSVILLE INDUSTRIAL			
EDMONTON-PRINCE GEORGES COUNTY-MARYLAND			
DATE	BY	APP'D	DATE
10/14	5/7/70		
MARTIN INDUSTRIAL PARK VENTURE 2045 University Blvd E. Adelphi, Maryland		MACRIS AND SIMKO Consulting Engineers 817 Silver Spring Ave. Silver Spring Md.	