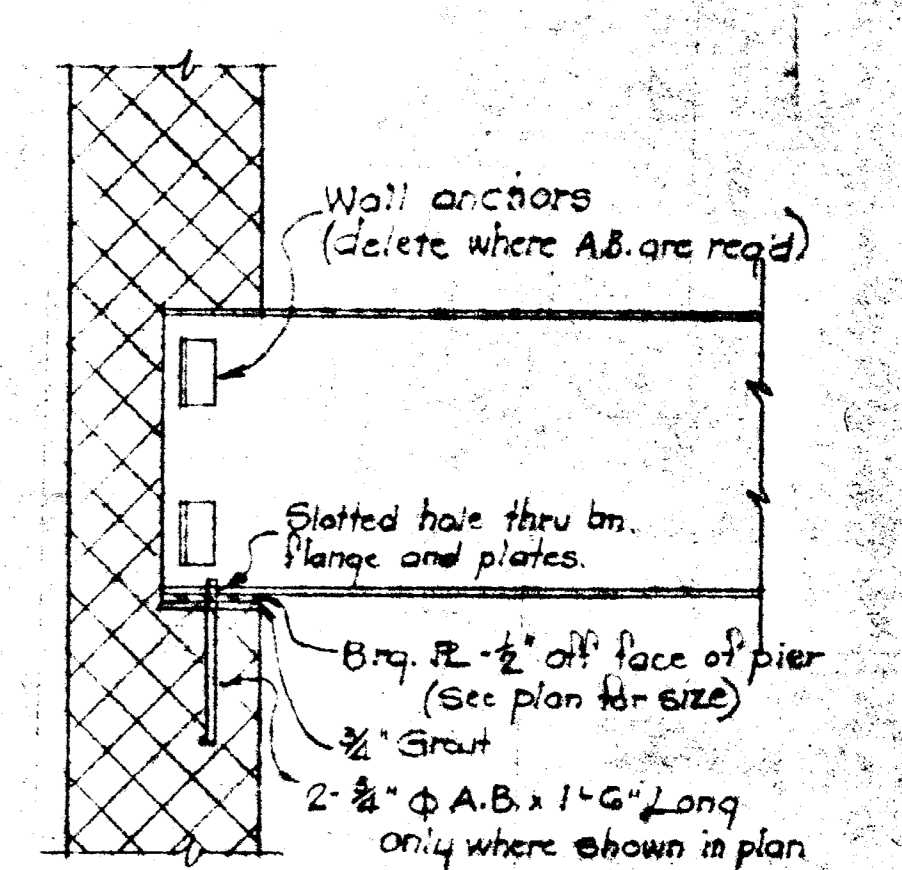
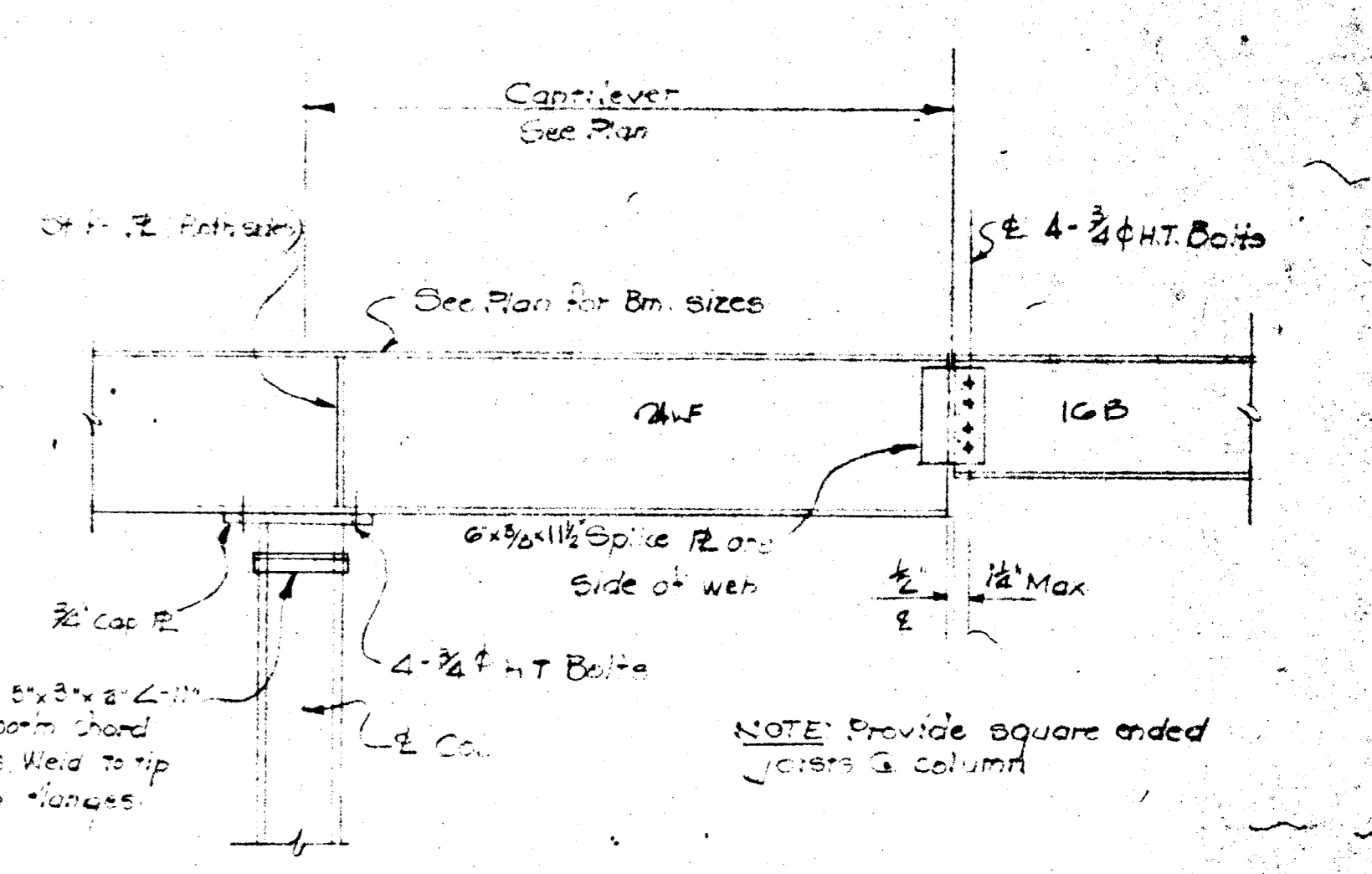


DETAIL "E" - 1/4" = 1'-0"

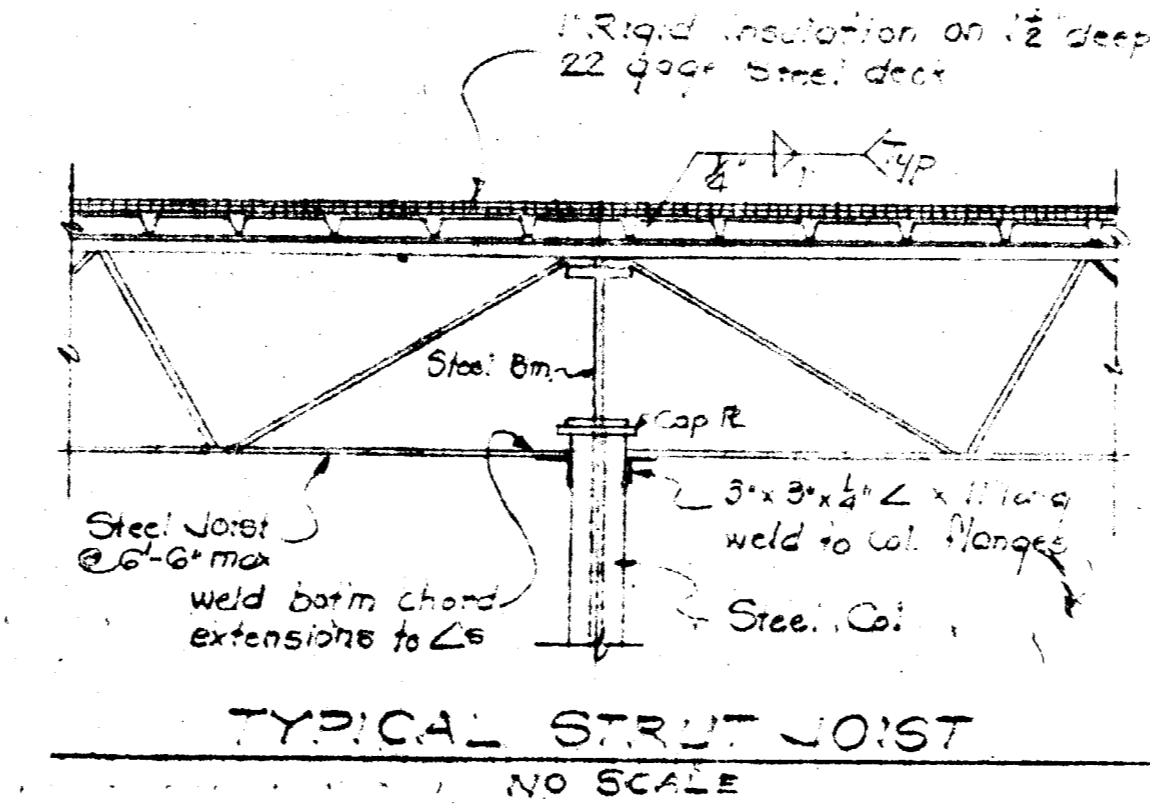


TYPICAL BEAM BEARING DETAIL
NO SCALE



TYPICAL CANTILEVER ROOF BEAM DETAIL
NO SCALE

- ROOF FRAMING PLAN 1/8" = 1'-0"**
- NOTES**
1. Roof shall be bonded 4-ply built-up roofing with gravel topping on 1" rigid insulation and 1/2" deep 22 gage steel deck continuous over 3 spans and welded @ 12" o.c. each brg.
 2. Bridging shall be 1 1/2" x 1 1/2" x 1/4" L and shall be welded top and bottom. Provide X-bracing at all end panels.
 3. Top of steel beams shall be (-2 1/2") from top of steel joists.
 4. Top of joists shall be (10") above F.F. @ rear and (10 1/2") above finished floor or front. At units 314, top joints shall be (10 1/2") above finished floor.
 5. Frame all roof openings with 4" x 4" x 3/8" L unless otherwise noted.



TYPICAL STRUT JOIST
NO SCALE

REVISIONS		
NO.	DATE	BY

PROPOSED
WAREHOUSE NO 38
HYATTSVILLE INDUSTRIAL
EDMUNSTON-PRINCE GEORGES COUNTY, MARYLAND

MACRIS AND SIMKO
CIVIL-STRUCTURAL ENGINEERS
817 SILVER SPRING AVE.
SILVER SPRING, MARYLAND 20910 (301)883-0030

DRAWN BY: D.M.
 CHECKED BY: J.A.M.
 JOB NO: 70-40
 DRAWING NO: 6-17