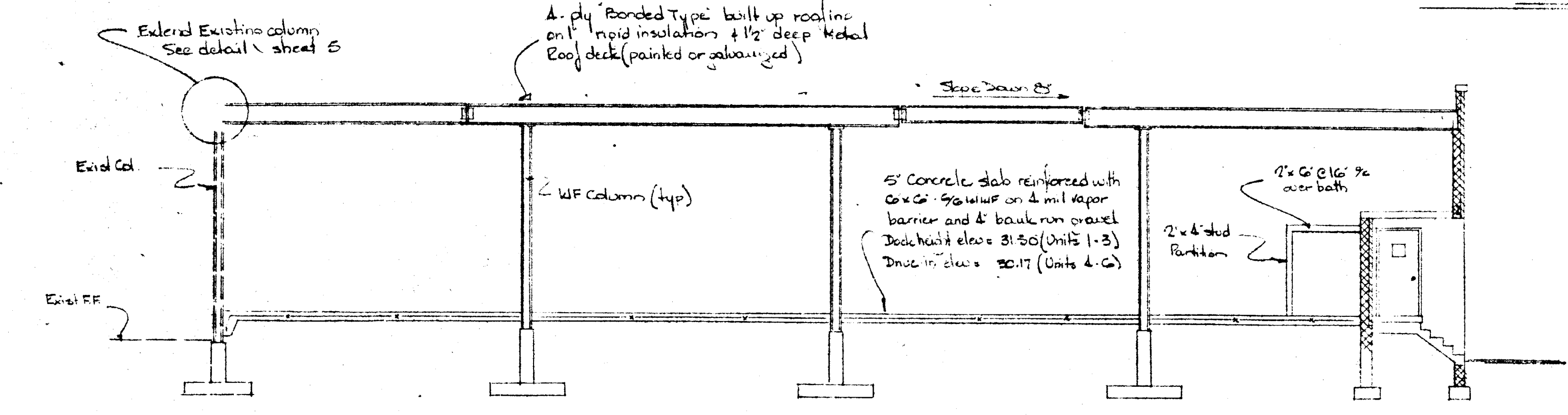
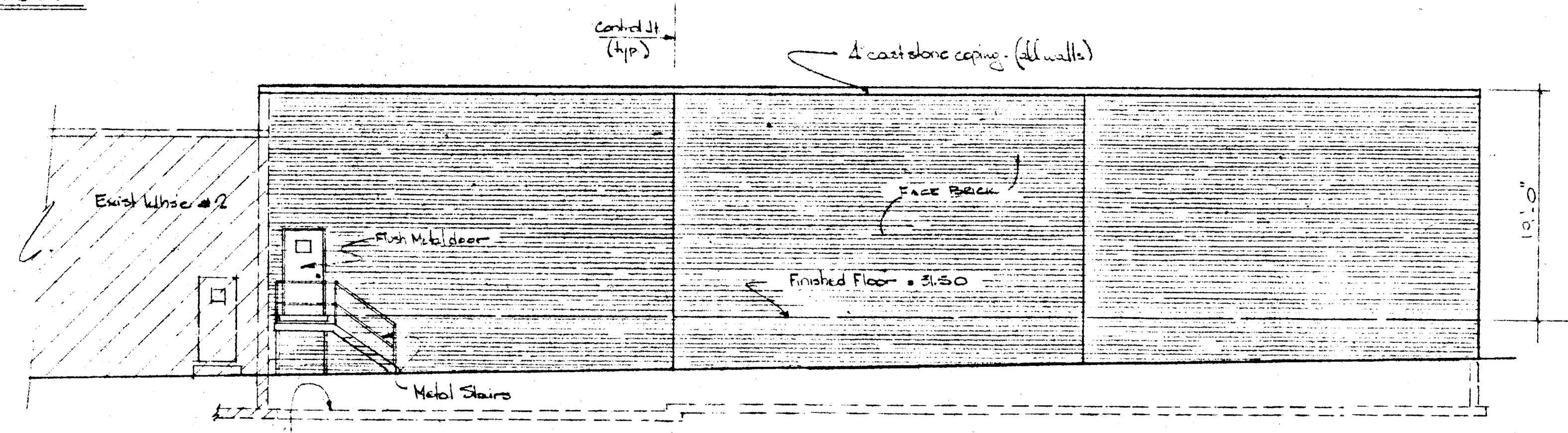


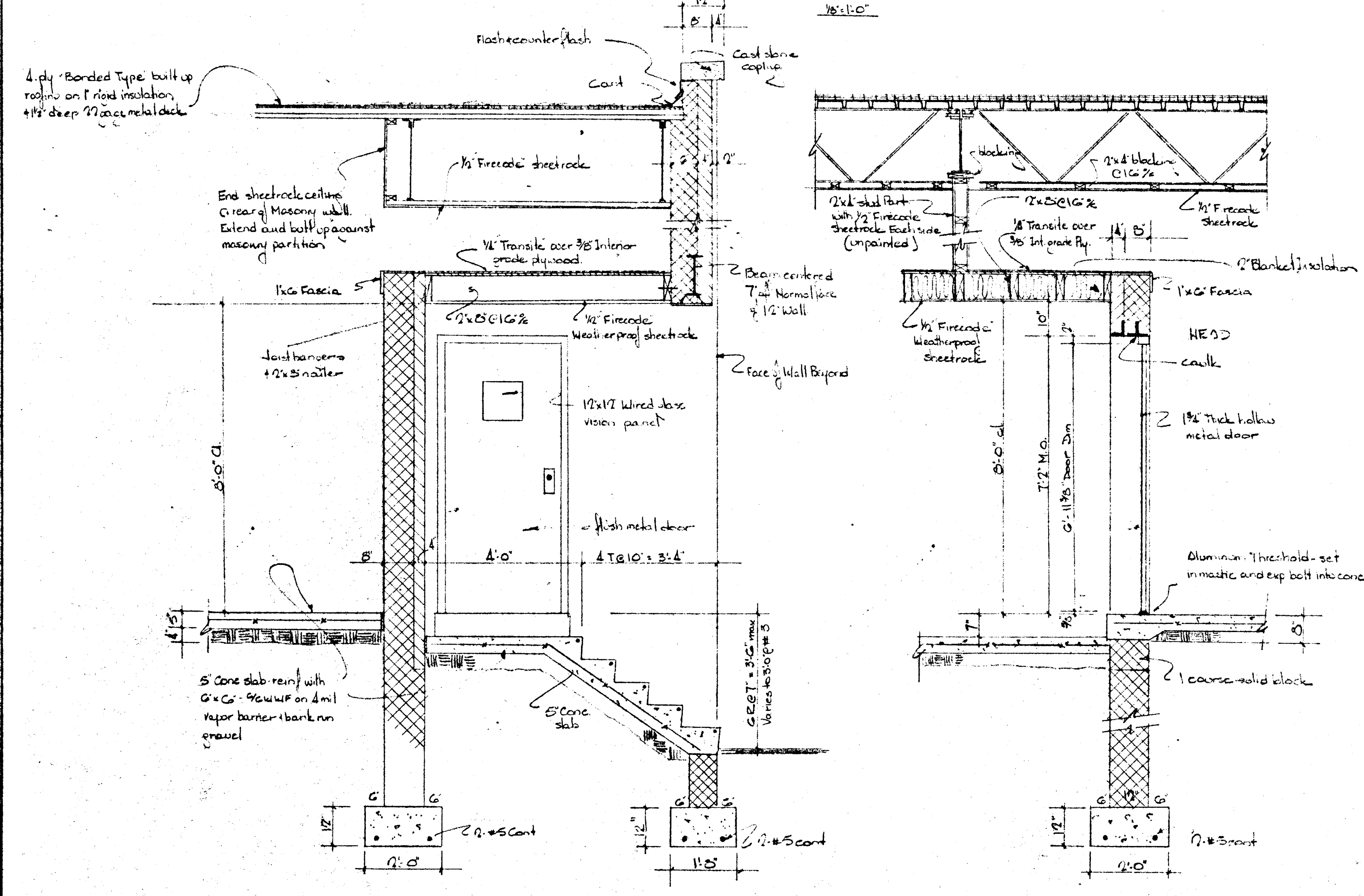
FRONT ELEVATION



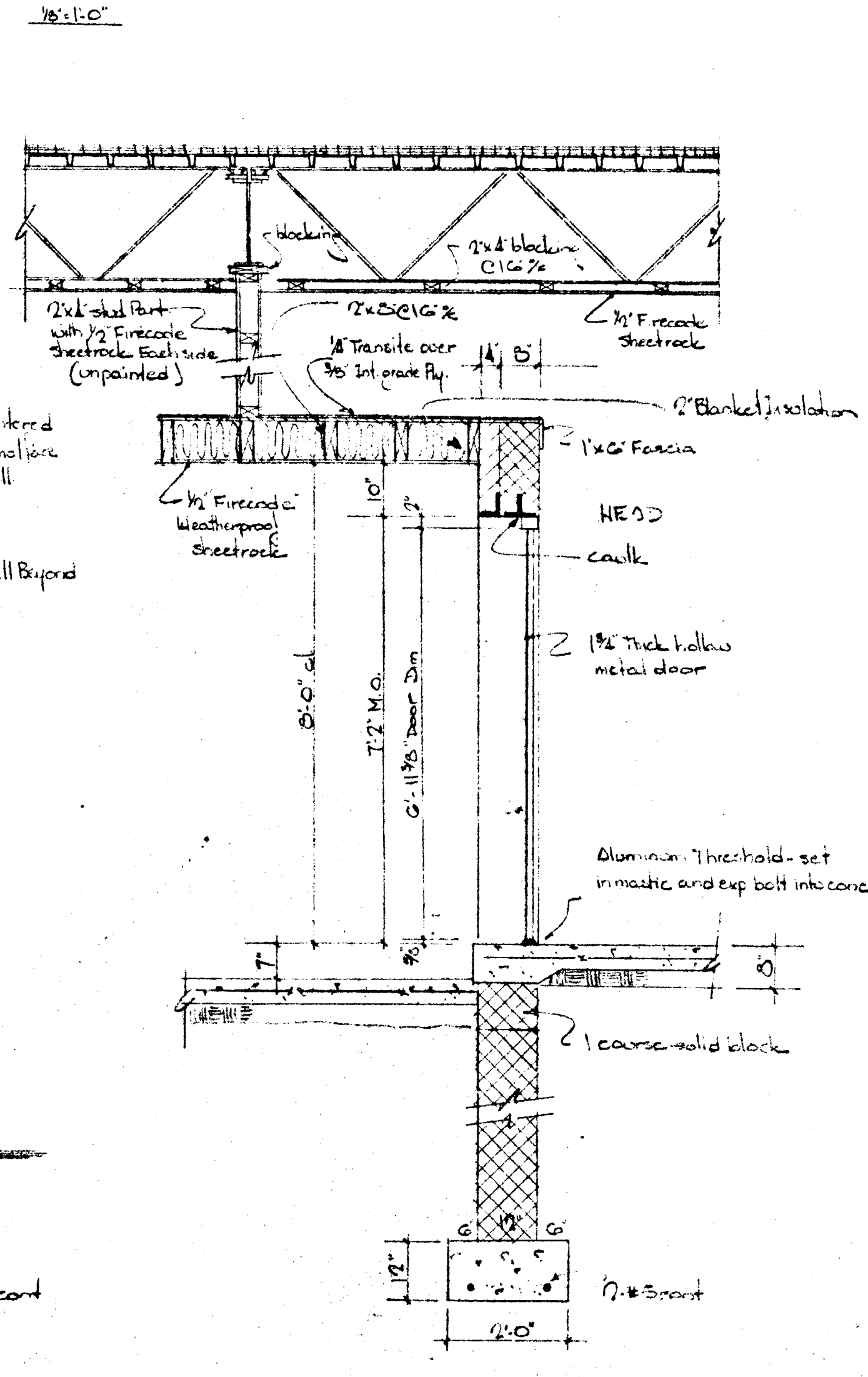
TYPICAL TRANSVERSE SECTION



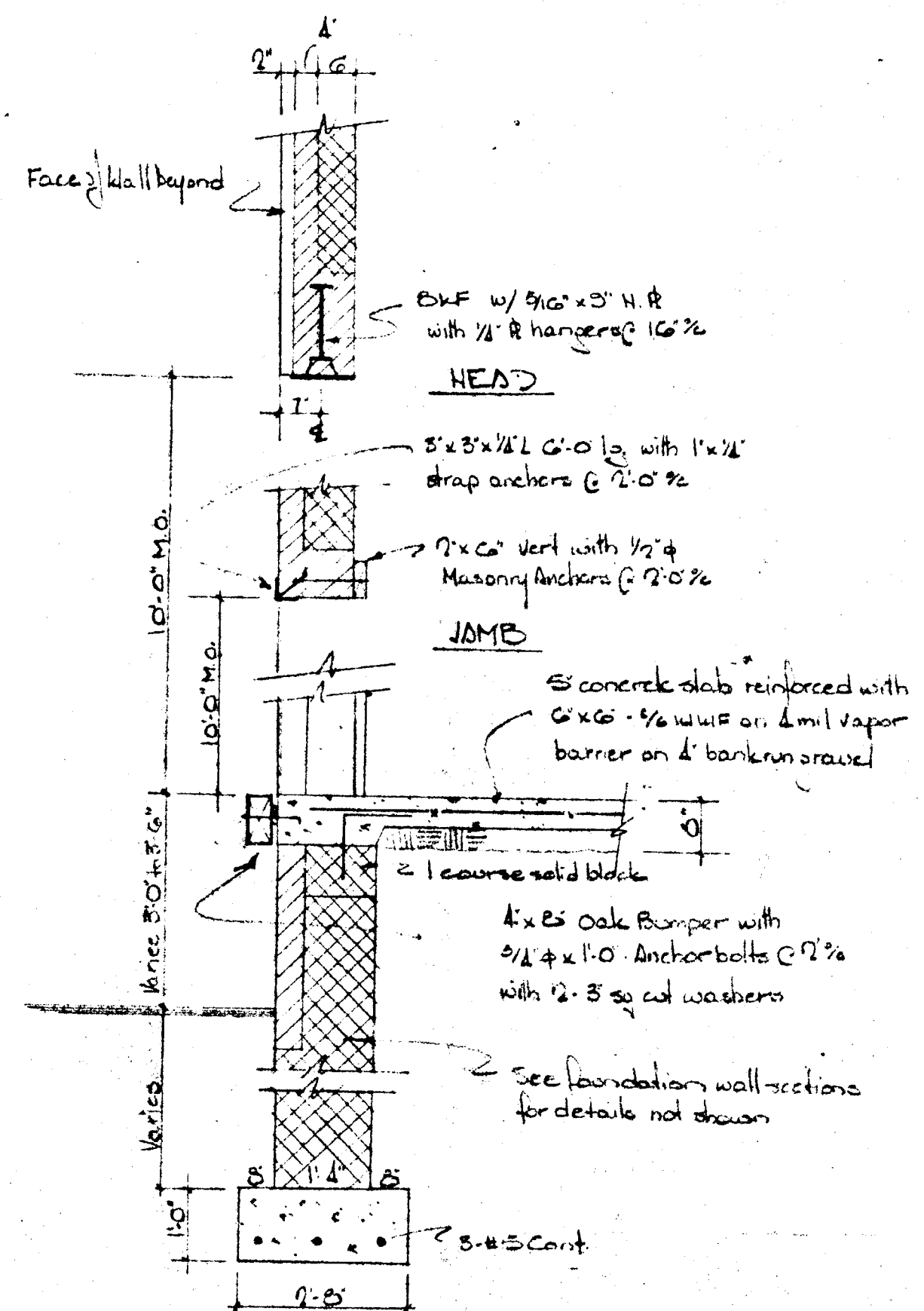
RIGHT SIDE ELEVATION



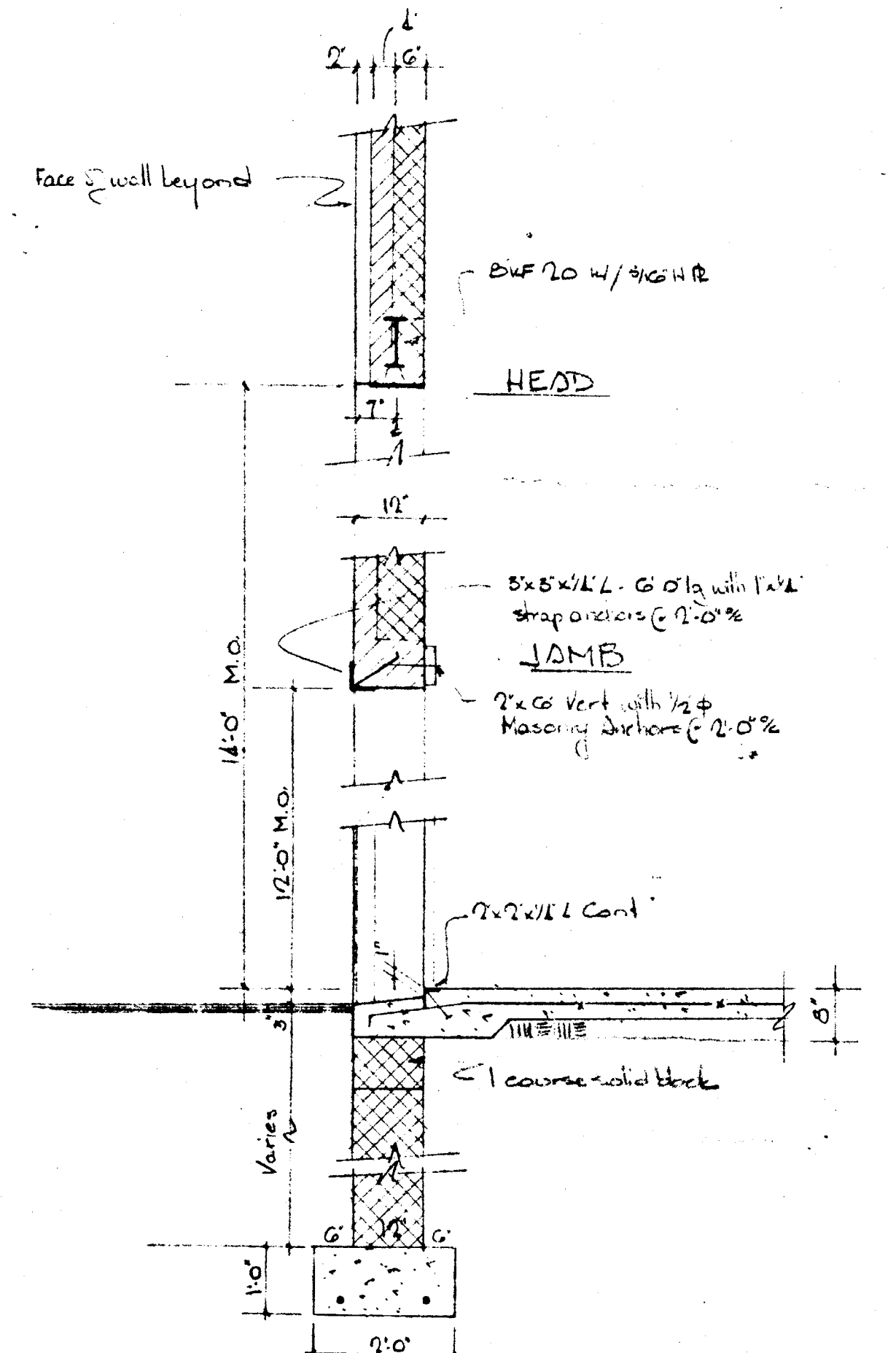
SECTION A-A



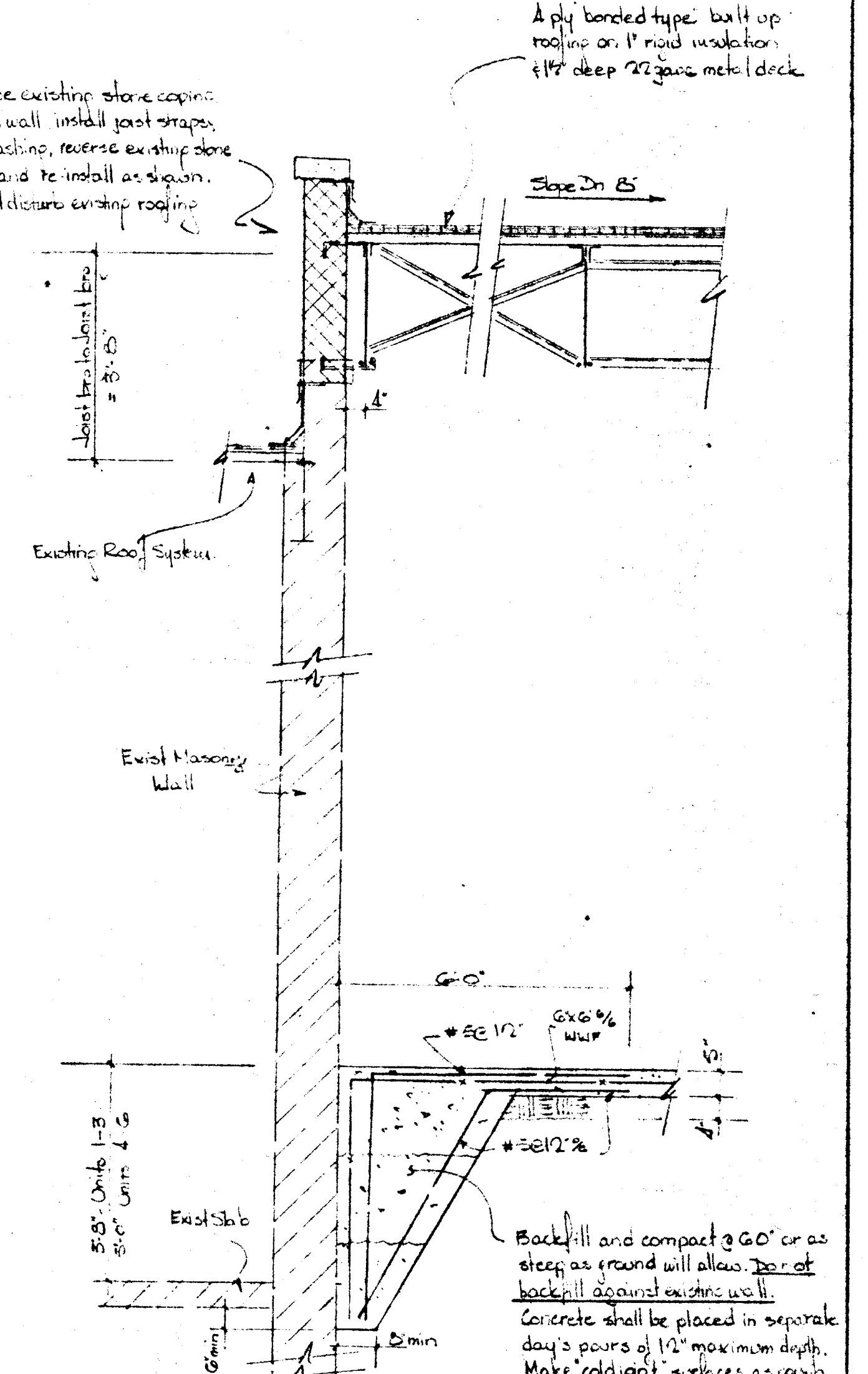
SECTION B-B



SECTION C-C



SECTION D-D



SECTION E-E

PROPOSED WAREHOUSE NO. 3			
HYATTSVILLE INDUSTRIAL			
EDMONSTON-PRINCE GEORGES COUNTY-MARYLAND			
REVISIONS	MARTIN INDUSTRIAL PARK VENTURE 3045 University Blvd E. Adelphi, Maryland	MACRIS AND SIMKO Consulting Engineers 817 Silver Spring Ave. Silver Spring Md.	Job No 60-28 SHEET 2 Date