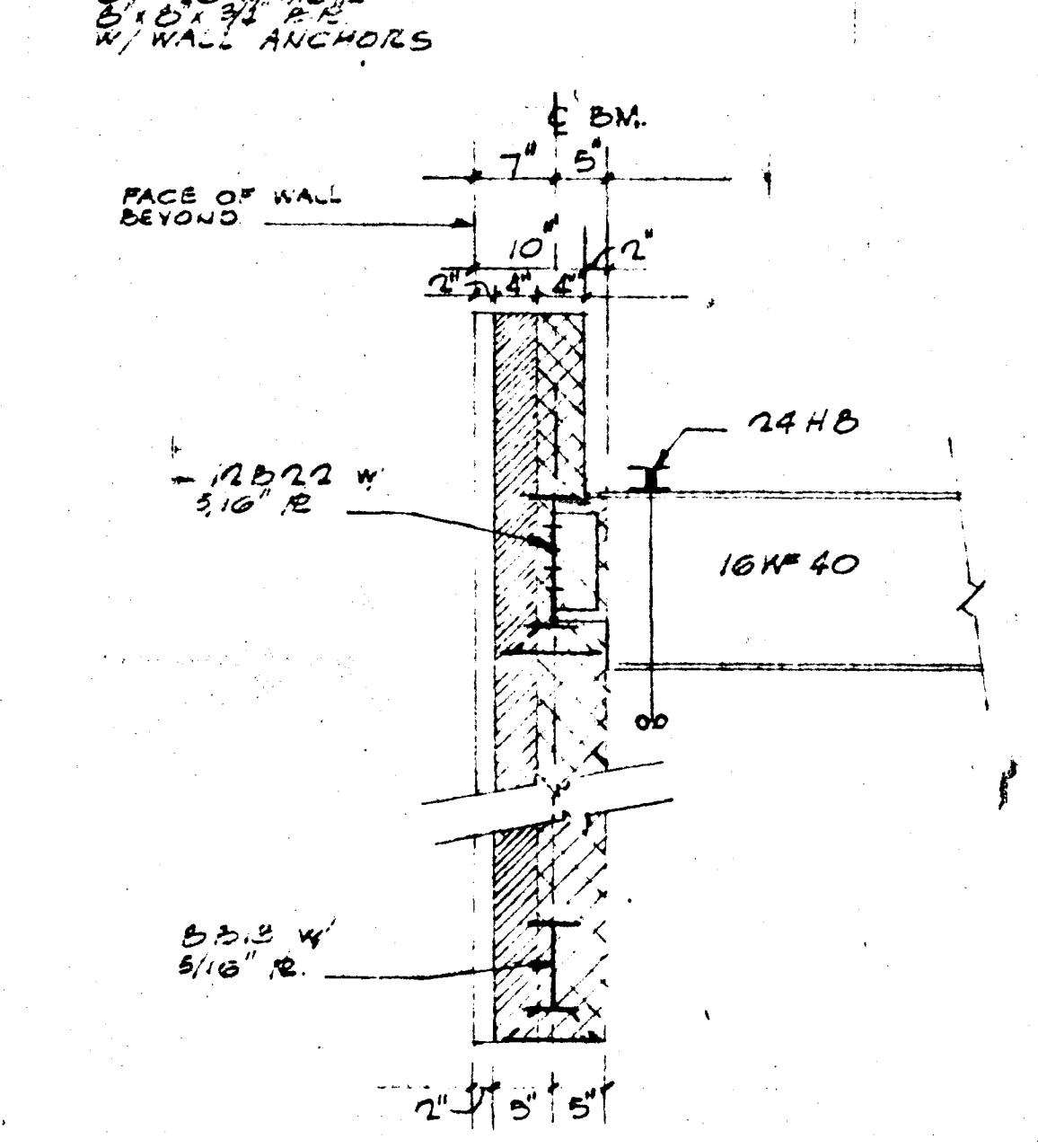
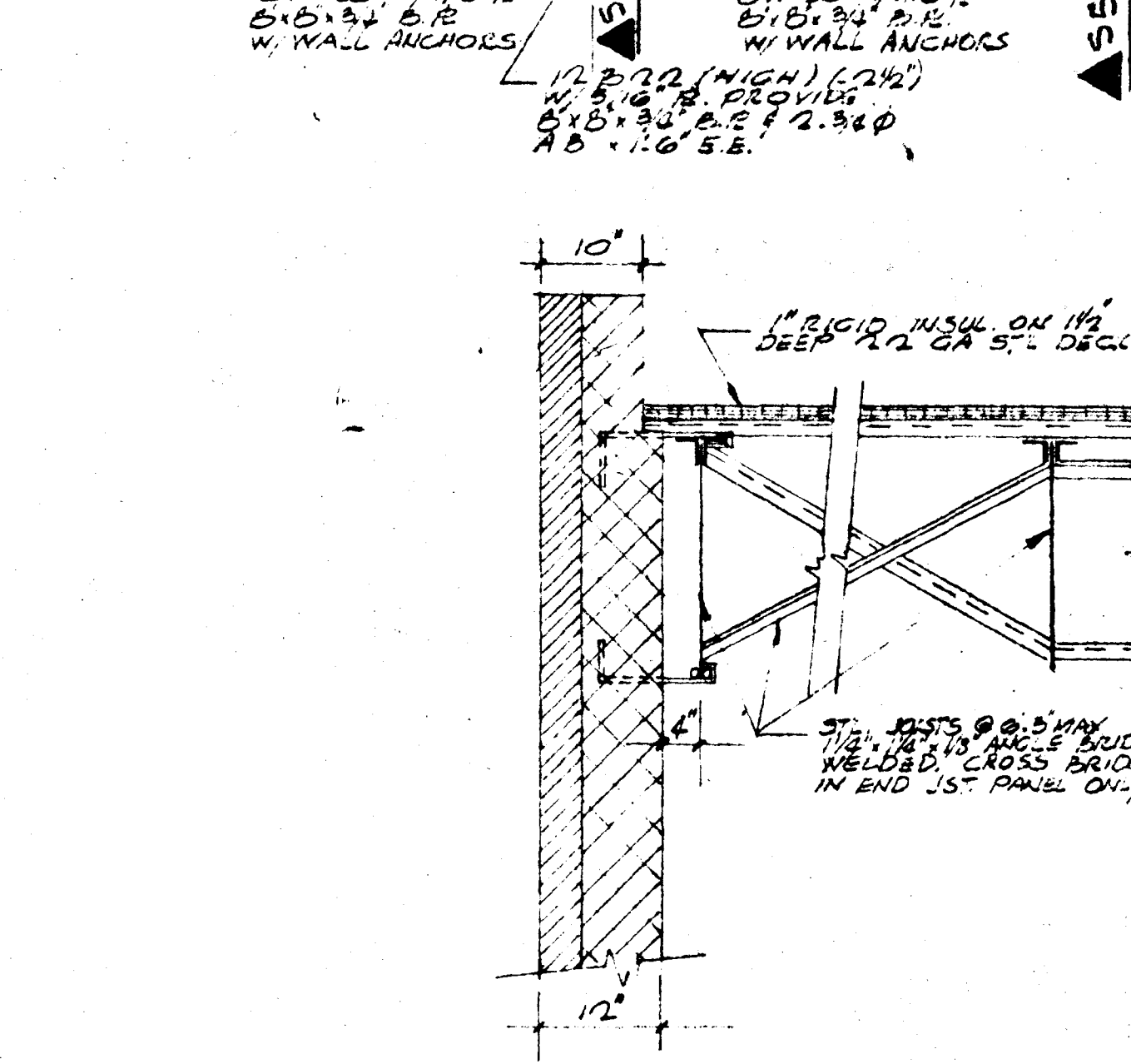


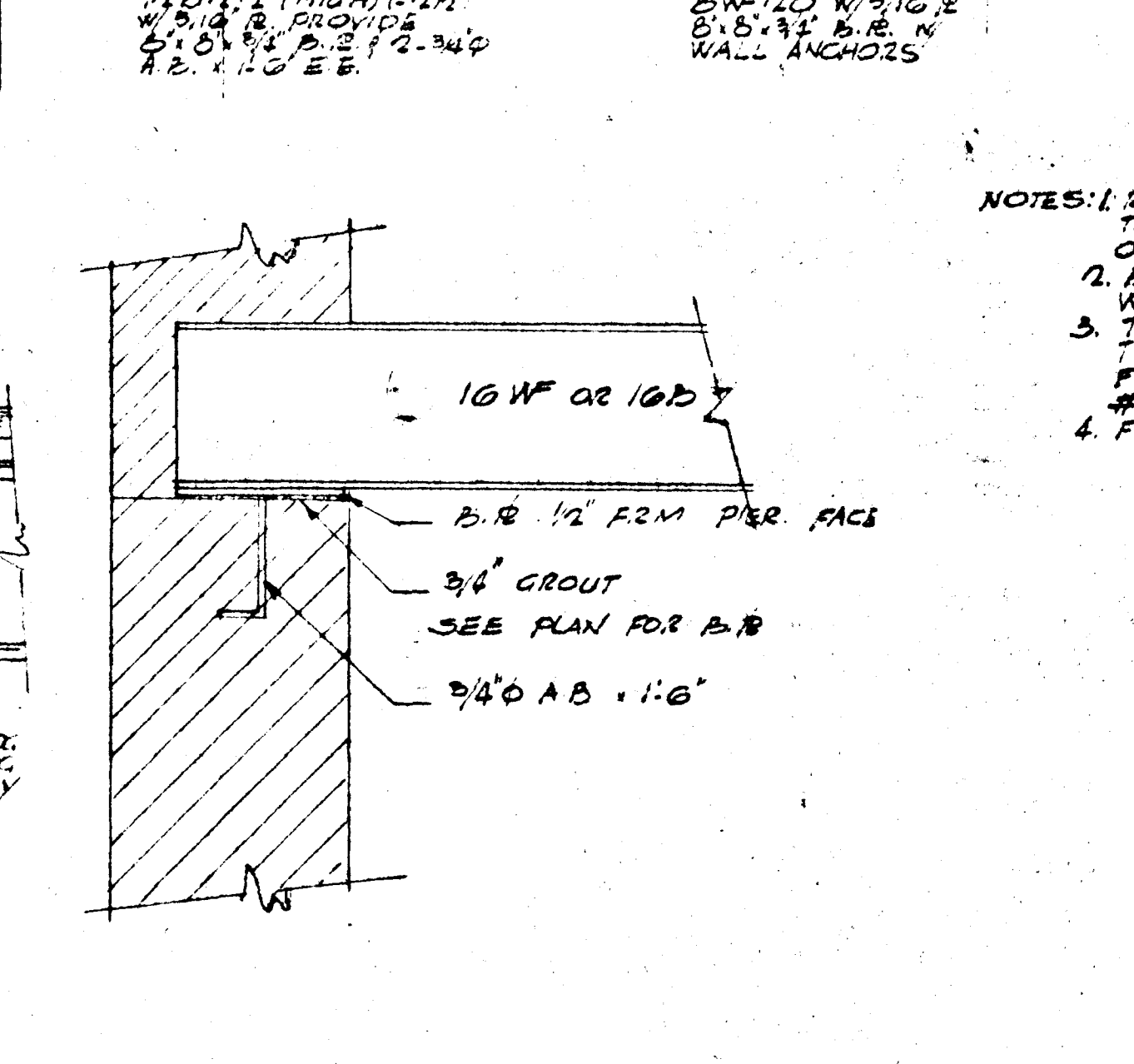
SECTION 55.1 scale: 3/4"=1'-0"



SECTION 55.2 scale: 3/4"=1'-0"



SECTION 55.3 scale: 3/4"=1'-0"



TYP. BEAM BRNG DETAIL

- NOTES: 1. ROOF SHALL BE 4 PLY BONDED TYPE BUILT UP ROOFING W/ GRAVEL TOPPING ON 1" RIGID INSULATION 1/2" DEEP 12 GA. STEEL DECK CONT. OVER 3 SPANS & WELDED @ 12" ON EA. BEARING  
 2. BRIDGING SHALL BE 1/2" x 1/2" x 1/8" L. HORIZ. BRIDGING TOPY BOT. WELDED, PROVIDE X-BRIDGING IN END PANELS  
 3. TOP OF STEEL BEAMS SHALL BE (1/2") FROM TOP OF STL JOISTS. TOP OF STEEL JOISTS SHALL BE 10'-10 1/2" ABOVE FINISHED FLOOR AT FRONT WALL & 17'-6 1/2" AT REAR EXCEPT FOR WHSE #3 & #5, WHICH WILL BE 19'-8 1/2" AT FRONT & 17'-0 1/2" AT REAR.  
 4. FRAME ALL ROOF OPENINGS W/ 2" x 2" x 3/16" IS UNLESS OTHERWISE NOTED.

| PROPOSED                                 |                        |
|--|------------------------|
| WAREHOUSE NO. 2                          |                        |
| HYATTSVILLE INDUSTRIAL                   |                        |
| EDMUNSTON-PRINCE GEORGES COUNTY-MARYLAND |                        |
| REVISIONS                                |                        |
| MARTIN INDUSTRIAL                        | MACRIS AND SIMINO      |
| PARK VENTURE                             | Consulting Engineers   |
| 2045 University Blvd E.                  | 817 Silver Spring Ave. |
| Adelphi, Maryland                        | Silver Spring Md.      |