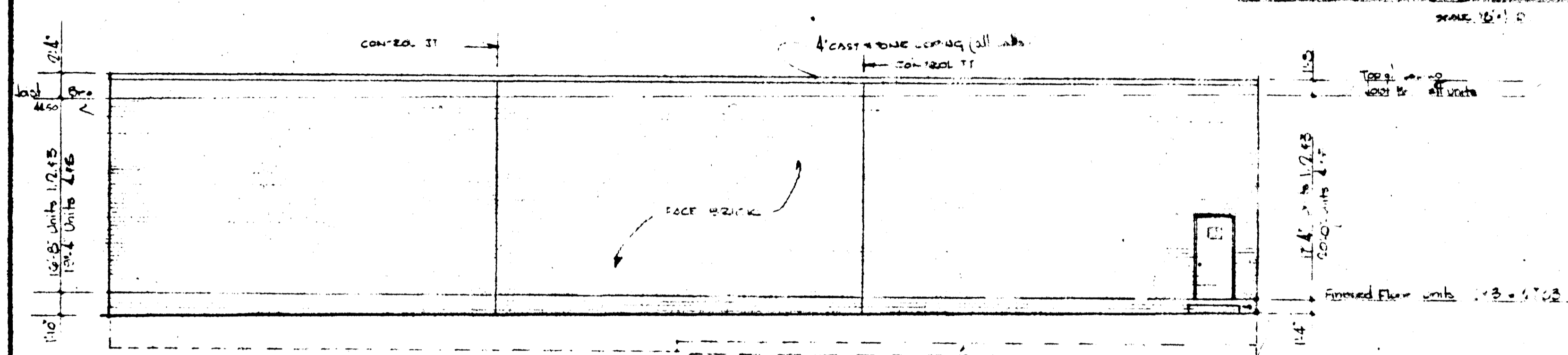
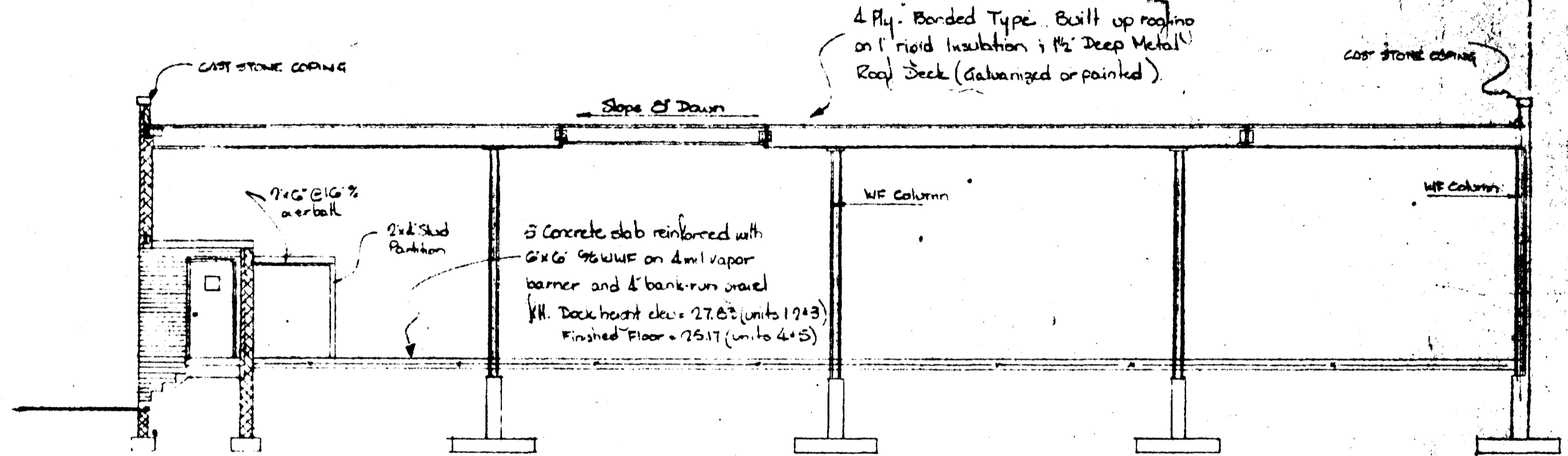


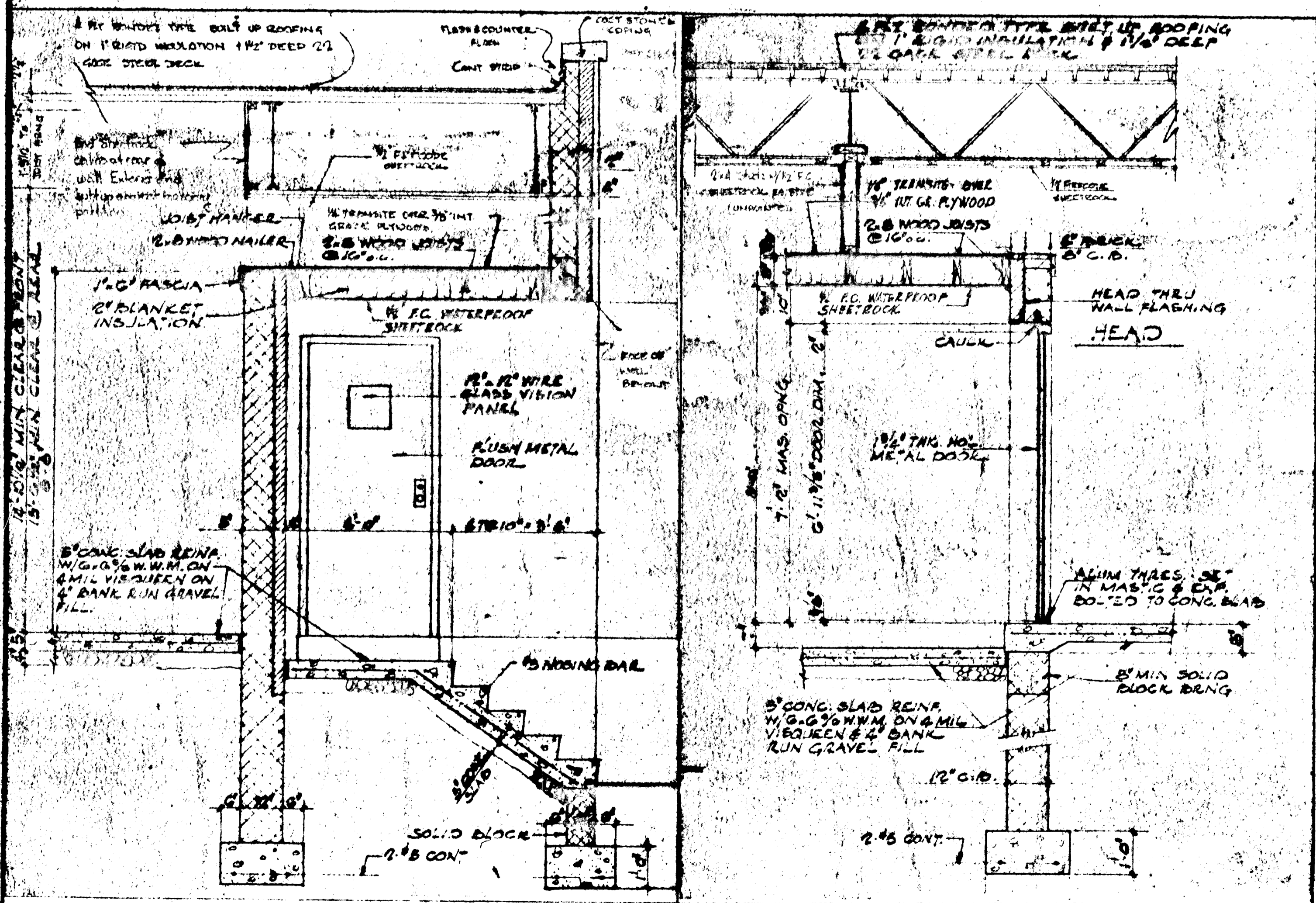
FRONT ELEVATION
SCALE 1/8" = 1'-0"



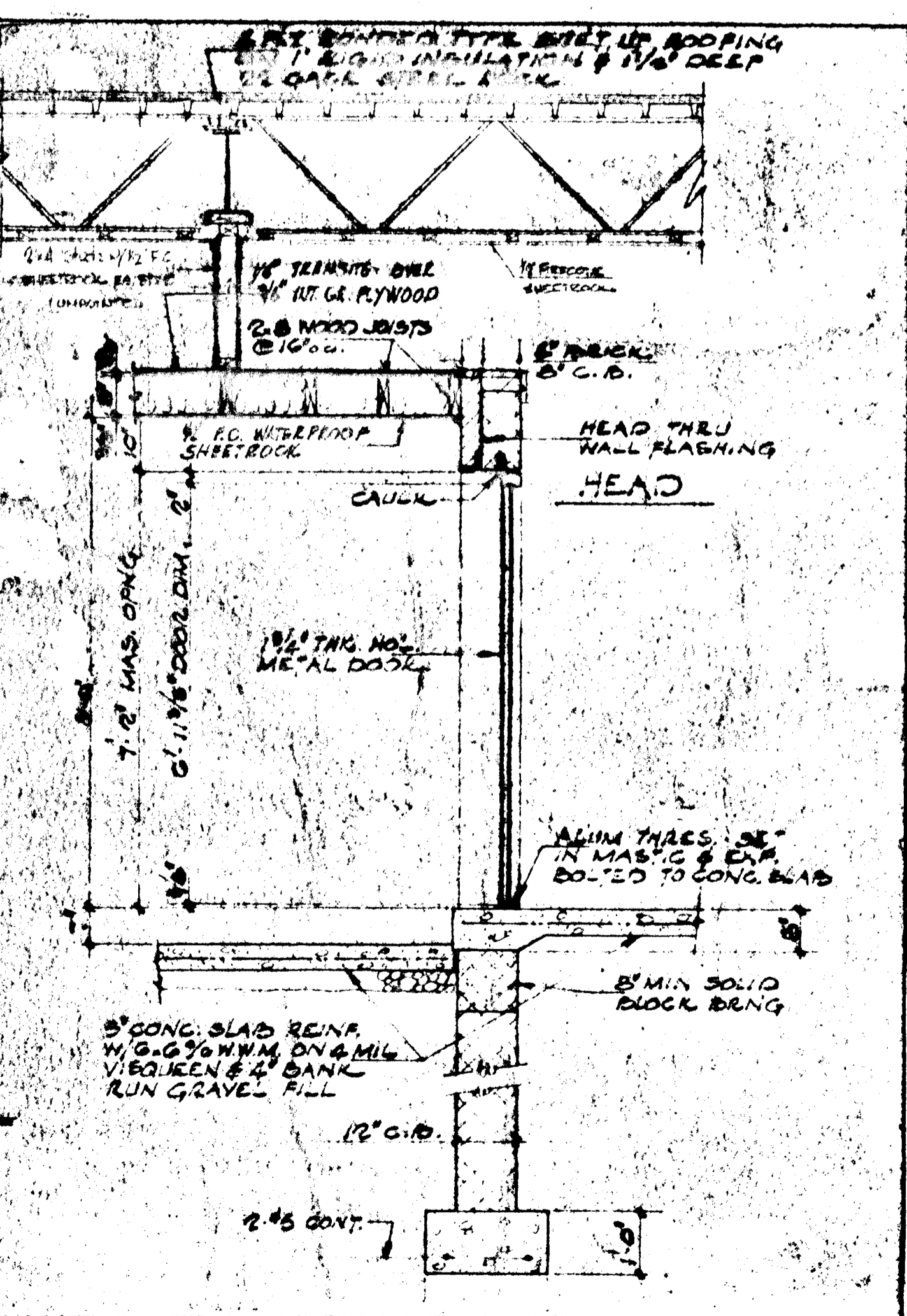
RIGHT SIDE ELEVATION
SCALE 1/8" = 1'-0"



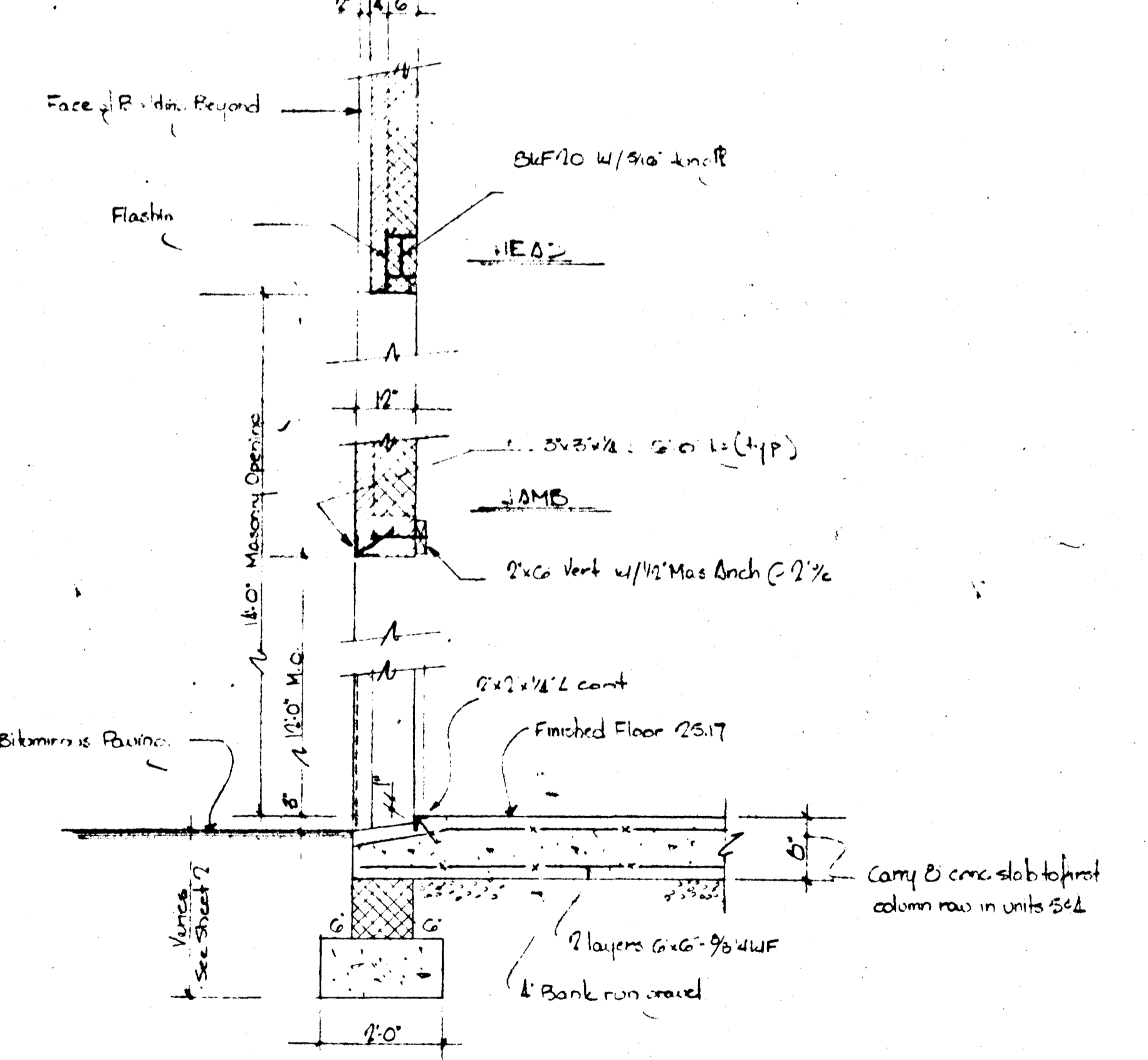
TYPICAL TRANSVERSE CROSS SECTION
SCALE 1/8" = 1'-0"



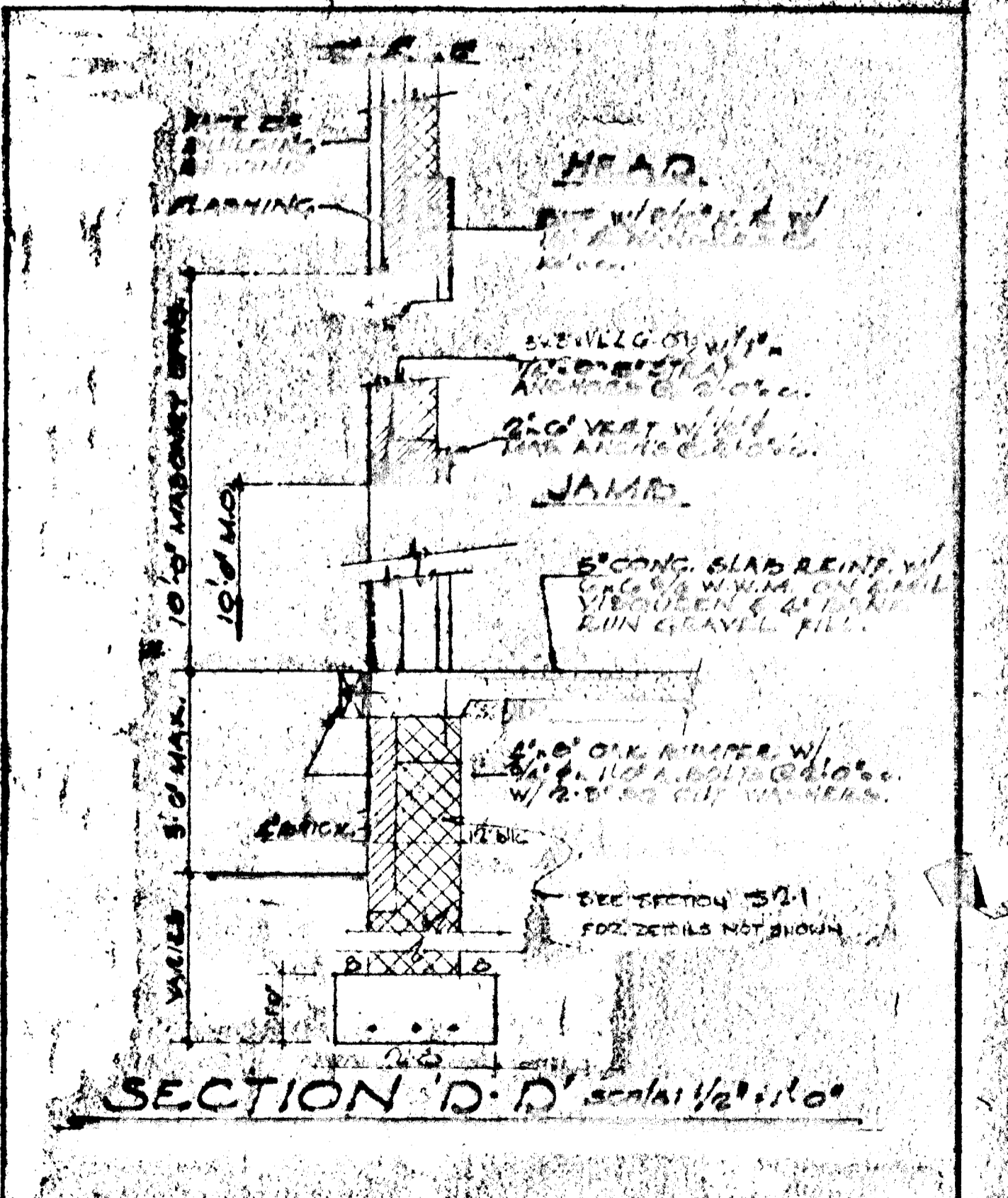
SECTION A-A
SCALE 1/8" = 1'-0"



SECTION B-B
SCALE 1/8" = 1'-0"



SECTION C-C
SCALE 1/8" = 1'-0"



SECTION D-D scale 1/8" = 1'-0"

| REVISIONS | | PROPOSED WAREHOUSE NO. 2 HYATTSVILLE INDUSTRIAL EDMUNSTON-PRINCE GEORGES COUNTY-MARYLAND | |
|-----------|--|--|---|
| | | MARTIN INDUSTRIAL PARK VENTURE 2045 University Blvd E. Baltimore, Maryland | MAGRIS AND RIMKO Consulting Engineers 817 Silver Spring Ave. Silver Spring Md. |